



# Quick Start Guide

for Hydrovos Model HV-DWSS-FF  
(for use with HV-DWSS-FFR)

**Note:** for use with cold water only. This system is intended to filter the cold water side of a standard kitchen or bathroom faucet. For replacement parts or questions, email [info@hydrovos.com](mailto:info@hydrovos.com).

## Materials Needed:

Drill or Philips head screwdriver, screws for mounting, box knife or other cutting tool, and a wrench.

## Installation Instructions:

### Step 1: Verify Parts List

Remove the system from the box and verify all components shown on the right are present.

### Step 2: Turn Off Water

Turn off the cold water valve under the sink. Next, open the cold water tap on the faucet to ensure water stops. Close the tap once pressure is relieved.

### Step 3: Disconnect the Cold Water Supply Line

Using a wrench, disconnect the cold water supply line (see Figure 1).

### Step 4: Mount the System

Select an area on the inside of your cabinet to mount the system, allowing 3 inches below the filter to allow for filter changes. Use the bracket as a template to mark the locations for the mounting holes, then use hardware appropriate for your home to mount the system shroud.

### Step 5: Measure Tubing

The 3/8" tubing provided needs to be used for both the inlet and outlet connections to the filter head. Measure the lengths from the cold water valve to the inlet side of filter system and from the faucet supply line to the outlet side.

Cut the tubing to the desired lengths with a straight 90 degree cut to avoid leaks.

### Step 6: Connect the Inlet Tubing

Select the tubing intended for the inlet and push it through the 3/8" nut so that the threads inside are oriented toward the cut end.

Then, place the 3/8" ferrule over end of tube, and push the 3/8" insert into the opening of the tubing (see Figure 2). Next, align the 3/8" nut with the cold water valve so that it can be tightened onto the 3/8" threads on the valve. Ensure the tubing is seated inside the valve's 3/8" port and tighten with a wrench. Finally, insert the other end of the tubing into the inlet side of the filter head. Ensure the fit is tight by gently tugging on the tubing for a tight seal.

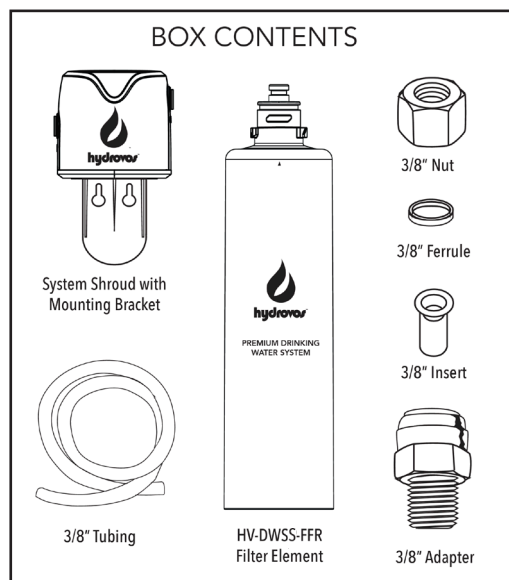


Figure 1



Figure 2

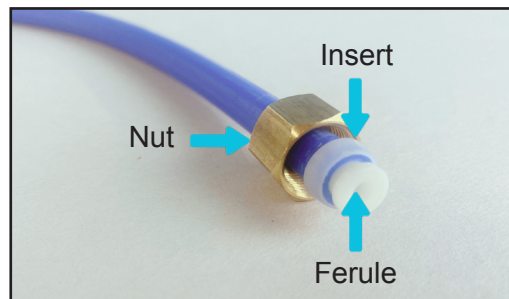
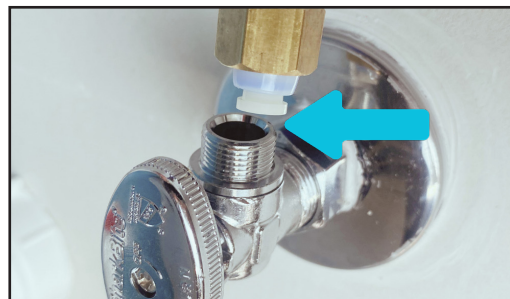


Figure 3

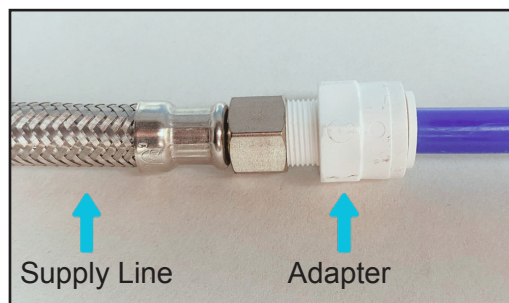


## Installation Instructions:

### Step 7: Connect the Outlet Tubing

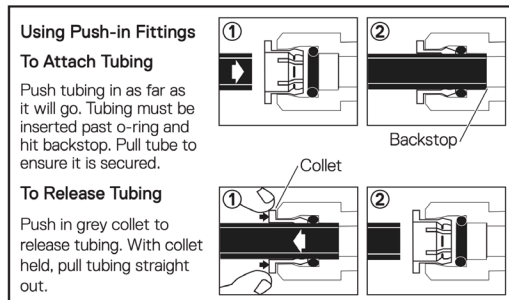
Select the tubing intended for the outlet and insert the one end into the open side of 3/8" adapter. Connect the adapter to the faucet supply line and tighten, being careful not to over-tighten (as shown in Figure 4). Next, insert the other end of the tubing into the outlet side of the filter head. Ensure the fit is tight by gently tugging on the tubing for a tight seal.

Figure 4



### Step 8: Verify Proper Installation

Open the cold water faucet tap above the sink, then slowly open the cold water valve below the sink. Allow the water to run from the tap for 6 minutes. Some black particles in water is normal, so allow it to run until the water runs free. Open the cabinet and verify that all connections are secure and leak-free.



<b>Model</b>	HV-DWSS-FF
<b>Replacement Elements</b>	HV-DWSS-FFR
<b>Flow Rate (GPM)</b>	2.0
<b>Capacity (Gallons)</b>	2000 gallons
<b>Water Supply</b>	City or Well
<b>Water Pressure</b>	25-120 psi (172 - 827 kPa)
<b>Water Temperature</b>	40° - 100°F (4.4° - 37.8°C)



This HV-DWSS-FF system has been certified by IAPMO R&T against NSF/ANSI standards 42, 53 and 401 for reduction of claims specified in the Performance Data Sheet.

The compounds certified under NSF 401 have been deemed as “emerging compounds/incidental contaminants.” Emerging compounds/incidental contaminants are those compounds that have been detected in drinking water supplies at trace levels. While occurring at only trace levels, these compounds can affect the public acceptance/perception of drinking water quality. Do not use with water that is microbiologically unsafe or of unknown quality without adequate disinfection before or after the system. Systems certified for cyst reduction may be used on disinfected waters that may contain filterable cysts. This system and installation to comply with local laws and regulations.

**1 YEAR LIMITED WARRANTY. WHAT IS COVERED UNDER THE LIMITED WARRANTY?** [HYDROVOS] warrants to the original consumer who purchased the Product that the Product is free of defects in materials and workmanship during the warranty period (“Warranty”). The warranty Period, together with any warranties implied by law, shall be limited to a duration of one (1) year from the original date of purchase by the consumer. Some states do not allow limitations on how long an implied warranty lasts, so the above limitation may not apply to you. Warrantor does not authorize anyone to assume for it any liability or to make on its behalf any additional warranties in connection with this Product or any part thereof. **WHAT IS NOT COVERED UNDER THE LIMITED WARRANTY?** This Warranty does not cover any damage that results from abuse, misuse, alteration or other actions or events beyond the control of HYDROVOS, including, but not limited to, damage caused by accident, fire, flood, freezing, Acts of God, misapplication, neglect, or exposure to oxidizing agents (such as chlorine, ozone, chloramines and other contaminants). This Warranty also does not cover damage to the Product that results from improper installation, use of the Product, or use of accessories or components that do not comply or conform to Product’s specifications. The Product must be used in operating conditions that conform to Warrantor’s recommended design guidelines. Refer to the specifications section in the Installation and Operating manual for approved application parameters. This Warranty is void if the Product is modified, repaired or altered by someone not authorized by Warrantor. **WHAT ARE YOUR REMEDIES UNDER THIS LIMITED WARRANTY?** During the Warranty Period, HYDROVOS will, in its sole discretion, either (a) repair or replace a Product [or part] that is defective free of charge or (b) refund the purchase price of such Product. HYDROVOS’s obligations of repair, replacement, or refund are conditioned upon the return of the defective Product to HYDROVOS in accordance with the terms of this Warranty. This Warranty does not cover any labor, transportation, or shipping expenses incurred. **HOW TO OBTAIN WARRANTY SERVICE** To obtain warranty service, you must notify HYDROVOS during the Warranty Period by calling 833-787-5001 or sending an email to [warranty@hydrovos.com](mailto:warranty@hydrovos.com) and providing; (a) prove of purchase, which may include the original receipt, order form, or bill of sale, (b) identification of the Product involved including its model or serial number, and (c) a description of the nature of the defect. **LIMITATION OF LIABILITY THIS WARRANTY AND THE REMEDIES DESCRIBED ABOVE ARE YOUR SOLE AND EXCLUSIVE REMEDIES AND ARE PROVIDED IN LIEU OF ALL OTHER WARRANTIES, EXPRESSED OR IMPLIED, WHETHER ORAL OR ARISING BY USAGE OF TRADE OR COURSE OF DEALING, INCLUDING, WITHOUT LIMITATION, ANY WARRANTIES OF FITNESS OR MERCHANTABILITY. THIS WARRANTY DOES NOT COVER AND IS INTENDED TO EXCLUDE ANY LIABILITY ON THE PART OF WARRANTOR, WHETHER UNDER THIS WARRANTY OR UNDER ANY WARRANTY IMPLIED BY LAW, FOR ANY ANTICIPATED OR LOST PROFITS, INCIDENTAL DAMAGES, SPECIAL DAMAGES, GENERAL DAMAGES, CONSEQUENTIAL DAMAGES, COSTS, TIME CHARGES OR OTHER LOSSES, WHETHER BASED ON BREACH OF CONTRACT, TORTIOUS CONDUCT OR ANY OTHER THEORY, INCURRED IN CONNECTION WITH THE PURCHASE, INSTALLATION, REPAIR OR OPERATION OF THIS PRODUCT. SOME STATES DO NOT ALLOW THE EXCLUSION OR LIMITATION OF INCIDENTAL OR CONSEQUENTIAL DAMAGES, SO THE ABOVE LIMITATION OR EXCLUSION MAY NOT APPLY TO YOU. THIS WARRANTY GIVES YOU SPECIFIC LEGAL RIGHTS, AND YOU MAY ALSO HAVE OTHER RIGHTS, WHICH VARY FROM STATE TO STATE.**